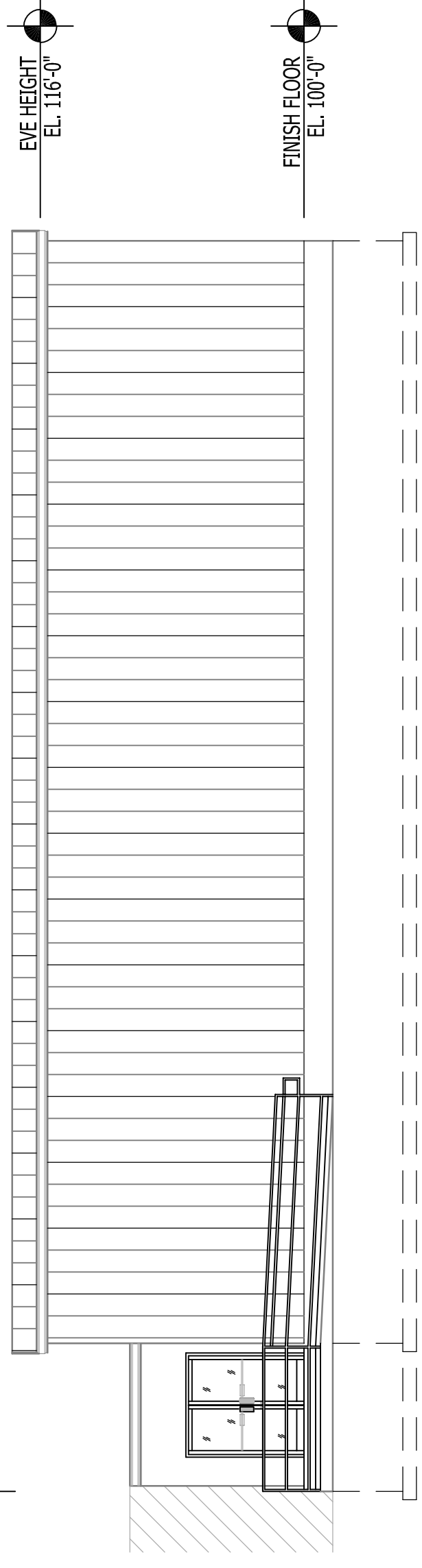


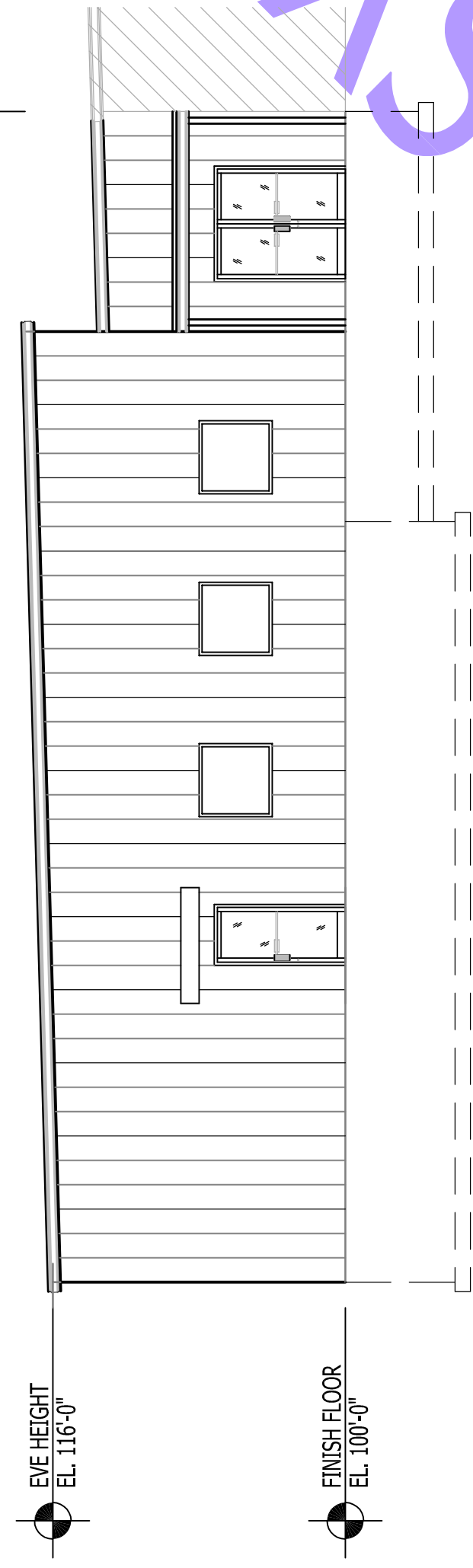
PROPOSED ADDITION | EXISTING FACILITY



**1 SOUTH ELEVATION**

A4.1 SCALE: 1/8" = 1'-0" (25X34)  
SCALE: 1/16" = 1'-0" (11X17)

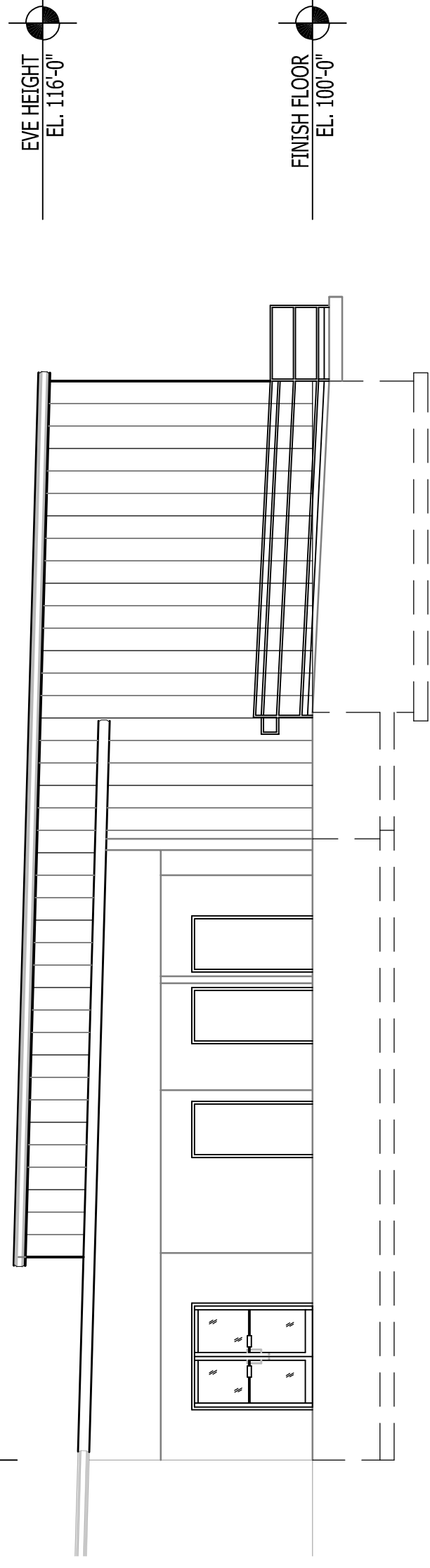
PROPOSED ADDITION | EXISTING FACILITY



**2 WEST ELEVATION**

A4.1 SCALE: 1/8" = 1'-0" (25X34)  
SCALE: 1/16" = 1'-0" (11X17)

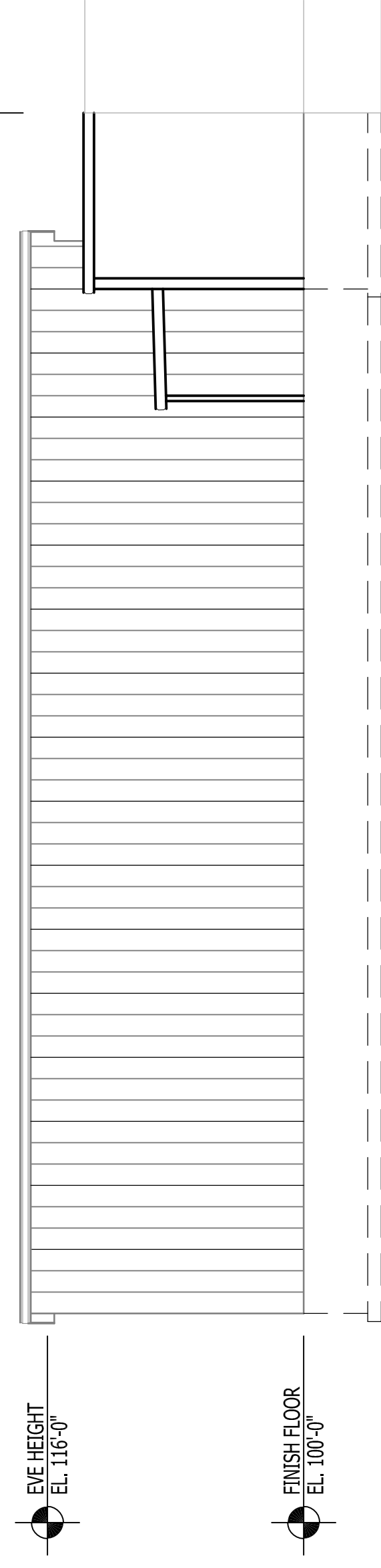
EXISTING FACILITY | PROPOSED ADDITION



**3 WEST ELEVATION**

A4.1 SCALE: 1/8" = 1'-0" (25X34)  
SCALE: 1/16" = 1'-0" (11X17)

PROPOSED ADDITION | EXISTING FACILITY



**4 NORTH ELEVATION**

A4.1 SCALE: 1/8" = 1'-0" (25X34)  
SCALE: 1/16" = 1'-0" (11X17)

DRAWN BY: DMK  
REVISIONS:  
DATE  
REVISION



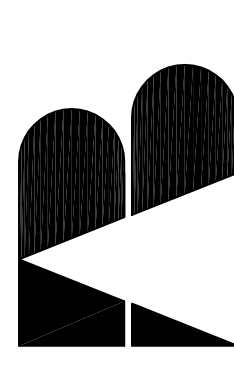
I hereby certify that this plan was prepared by me or under my direct supervision and that I am a duly registered architect under the laws of the state of Minnesota.

Randall L. Aysford  
REG. NO. 21268  
DATE:

This drawing and the information it contains is the property of A.B. SYSTEMS, INC. It must not be copied, traced, or released without our consent.

PROJECT TITLE:

HORMEL  
LIVESTOCK OFFICE ADDITION  
AUSTIN, MINNESOTA



**A.B. SYSTEMS, INC.**  
General Contractor/Developer  
209 South Ave. Dr. SE  
Burnsville, MN 55337  
PHONE: (612) 251-1155  
PHONE: (612) 251-1383  
FAX: (612) 251-7220  
E-MAIL: UPON REQUEST

SHEET TITLE:  
ELEVATIONS

SHEET NUMBER:  
**A2.1**  
PROJECT NUMBER:  
2008-190

PRELIMINARY DRAWING  
NOT FOR CONSTRUCTION